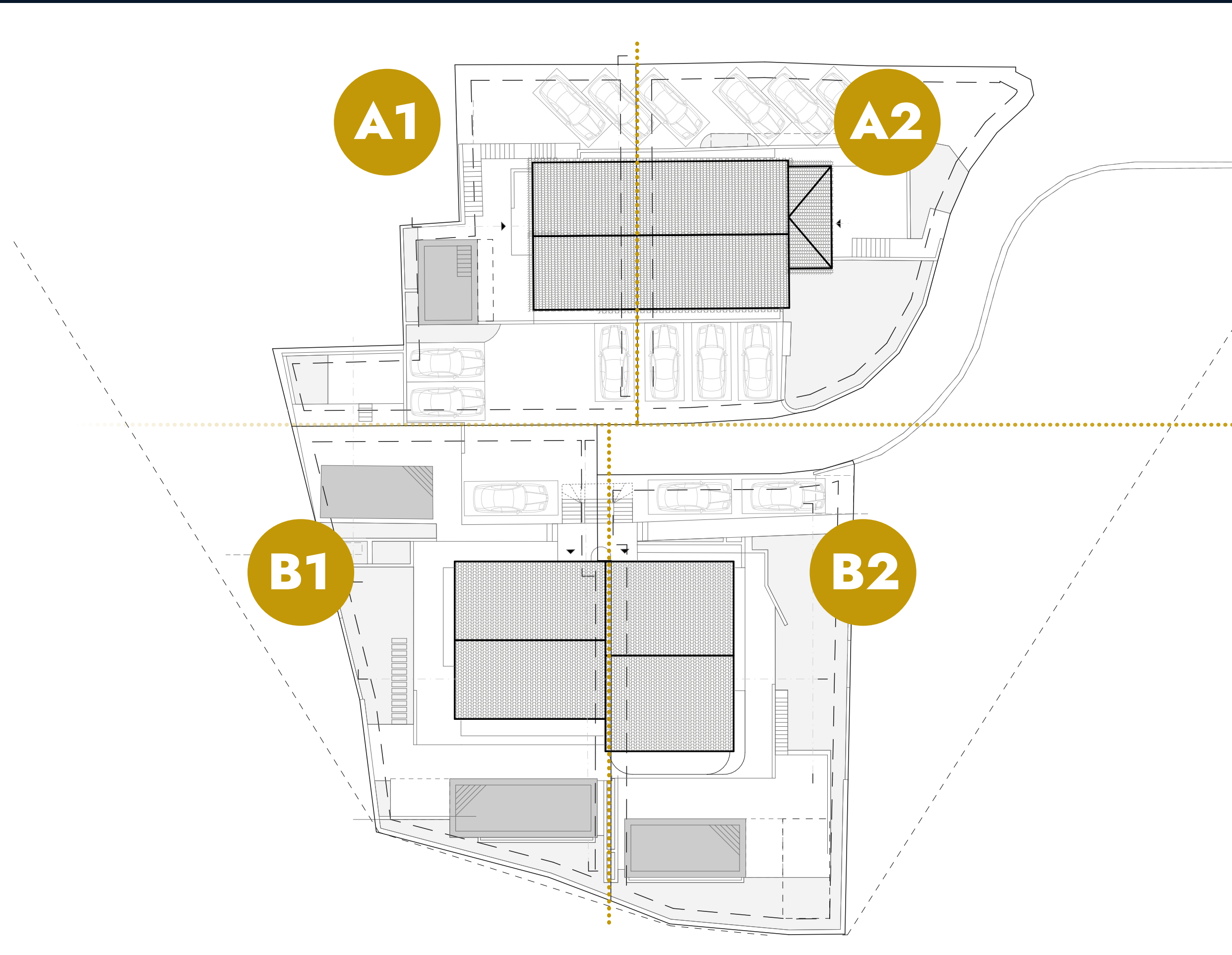




PANORAMIC SEA VIEW

# Bregji Residence

OPATIJA • CROATIA



A

B

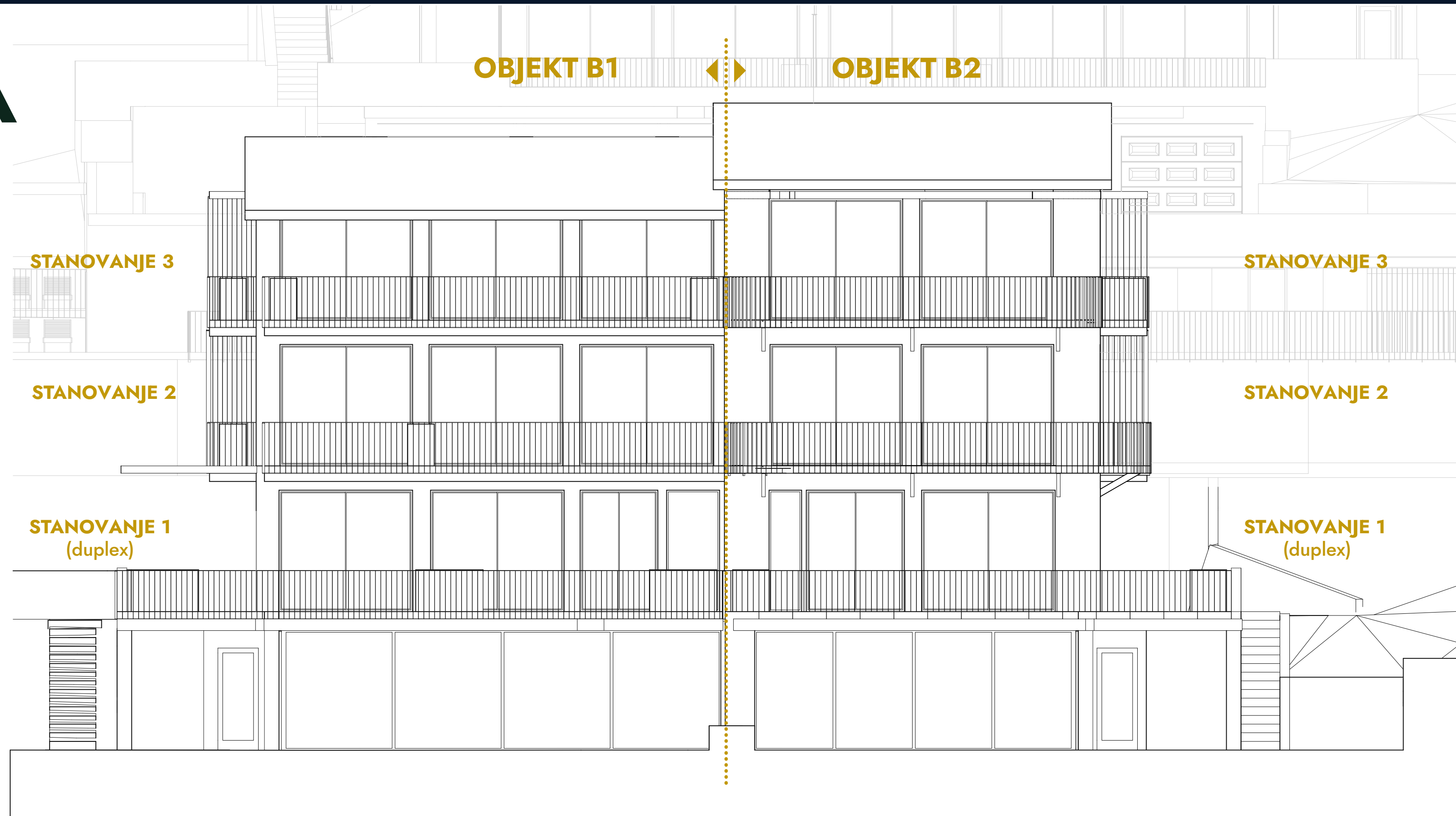
PANORAMIC SEA VIEW  
*Bregi Residence*  
OPATIJA • CROATIA

B



PANORAMIC SEA VIEW  
*Bregi Residence*  
OPATIJA • CROATIA

# FASADA



# OBJEKT B2

## STANOVANJE 2

### NOTRANJI PROSTORI

1. DNEVNI PROSTOR	30,33 m <sup>2</sup>
2. HODNIK	11,26 m <sup>2</sup>
3. SOBA	11,75 m <sup>2</sup>
4. KOPALNICA	2,66 m <sup>2</sup>
5. SOBA	10,73 m <sup>2</sup>
6. KOPALNICA	2,38 m <sup>2</sup>
7. SHRAMBA	1,07 m <sup>2</sup>
SHRAMBA	6,51 m <sup>2</sup>
KLET	10,20 m <sup>2</sup>
GARAŽA	16,30 m <sup>2</sup>

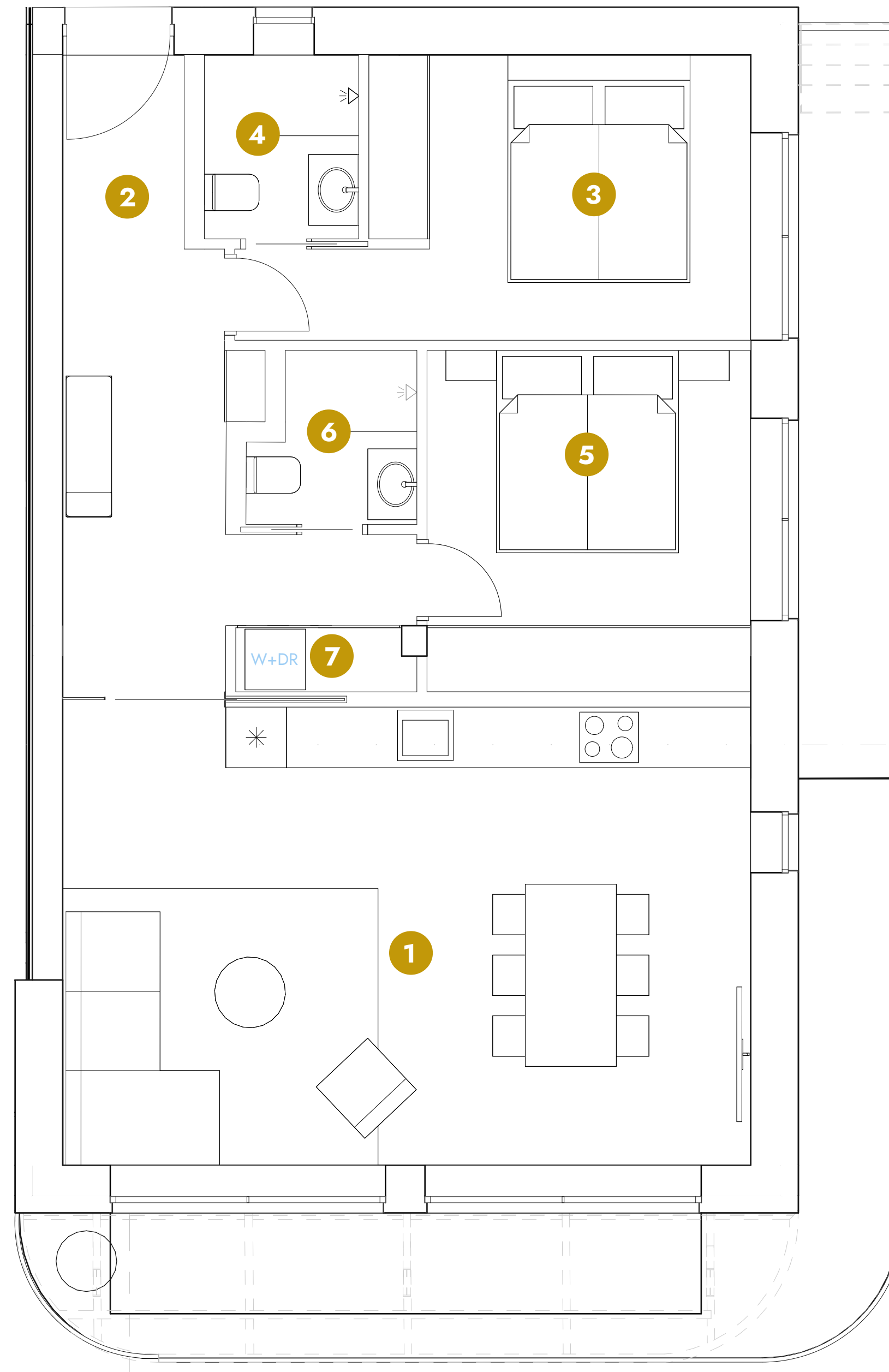
NOTRANJA POVRŠINA 103,19 m<sup>2</sup>

### ZUNANJI PROSTORI

POKRIT BALKON	17,26 m <sup>2</sup>
BALKON	6,83 m <sup>2</sup>
PARKIRNO MESTO	13,50 m <sup>2</sup>

ZUNANJE POVRŠINE 37,59 m<sup>2</sup>

SKUPNA POVRŠINA 140,78 m<sup>2</sup>



### SKUPNE POVRŠINE

DOSTOP DO BAZENA	8,16 m <sup>2</sup>
PROSTOR ZA SONČENJE	31,14 m <sup>2</sup>
SKUPNI BAZEN	30,77 m <sup>2</sup>
DOSTOP DO SHRAMB	16,64 m <sup>2</sup>

**86,71 m<sup>2</sup>**



BREGI RESIDENCE D.O.O.  
TRGOVAČKA ULICA 2A, 52470 UMAG, HRVAŠKA

E-mail: [info@bregi-residence.hr](mailto:info@bregi-residence.hr)