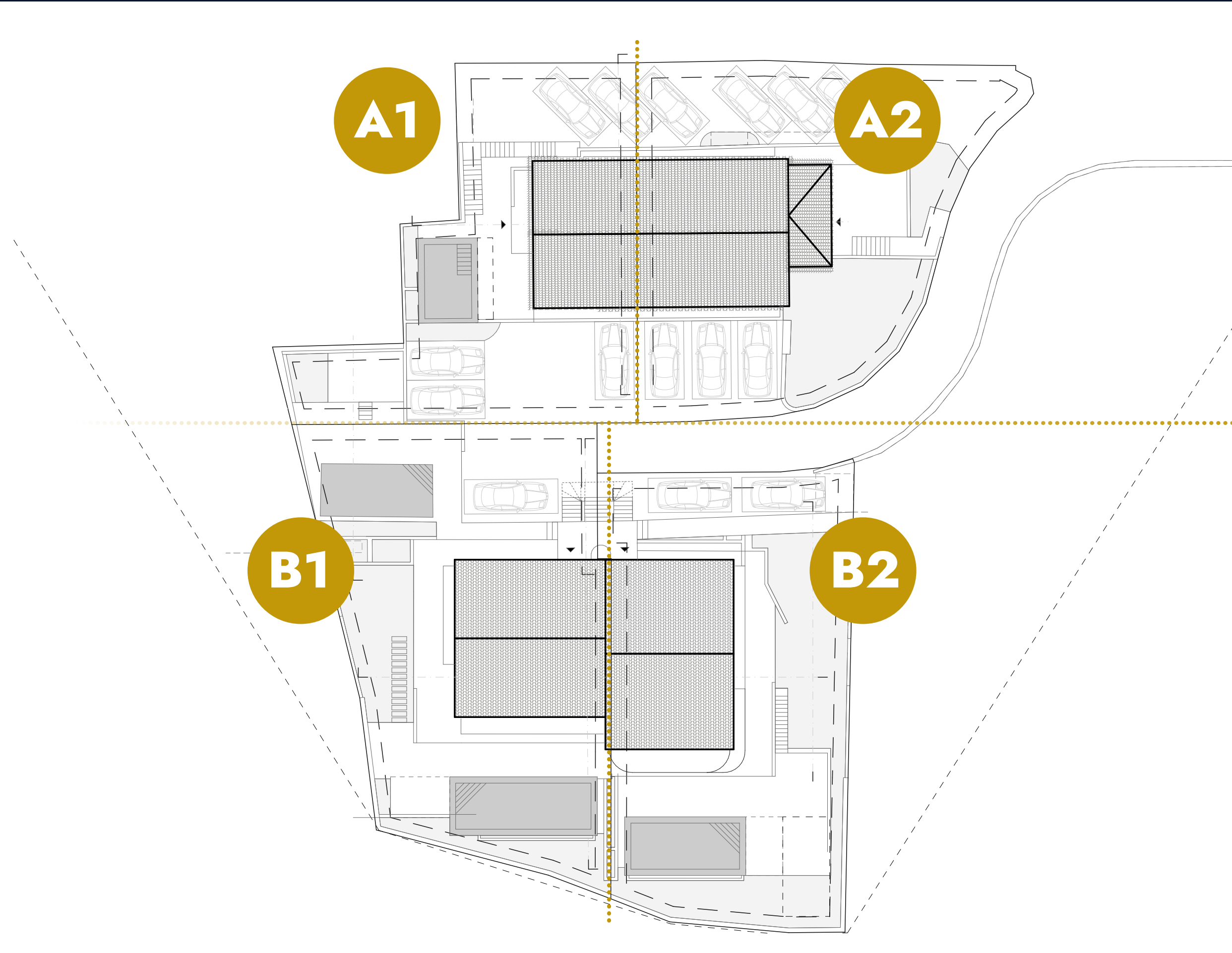




PANORAMIC SEA VIEW

# Bregi Residence

OPATIJA • CROATIA



A

B

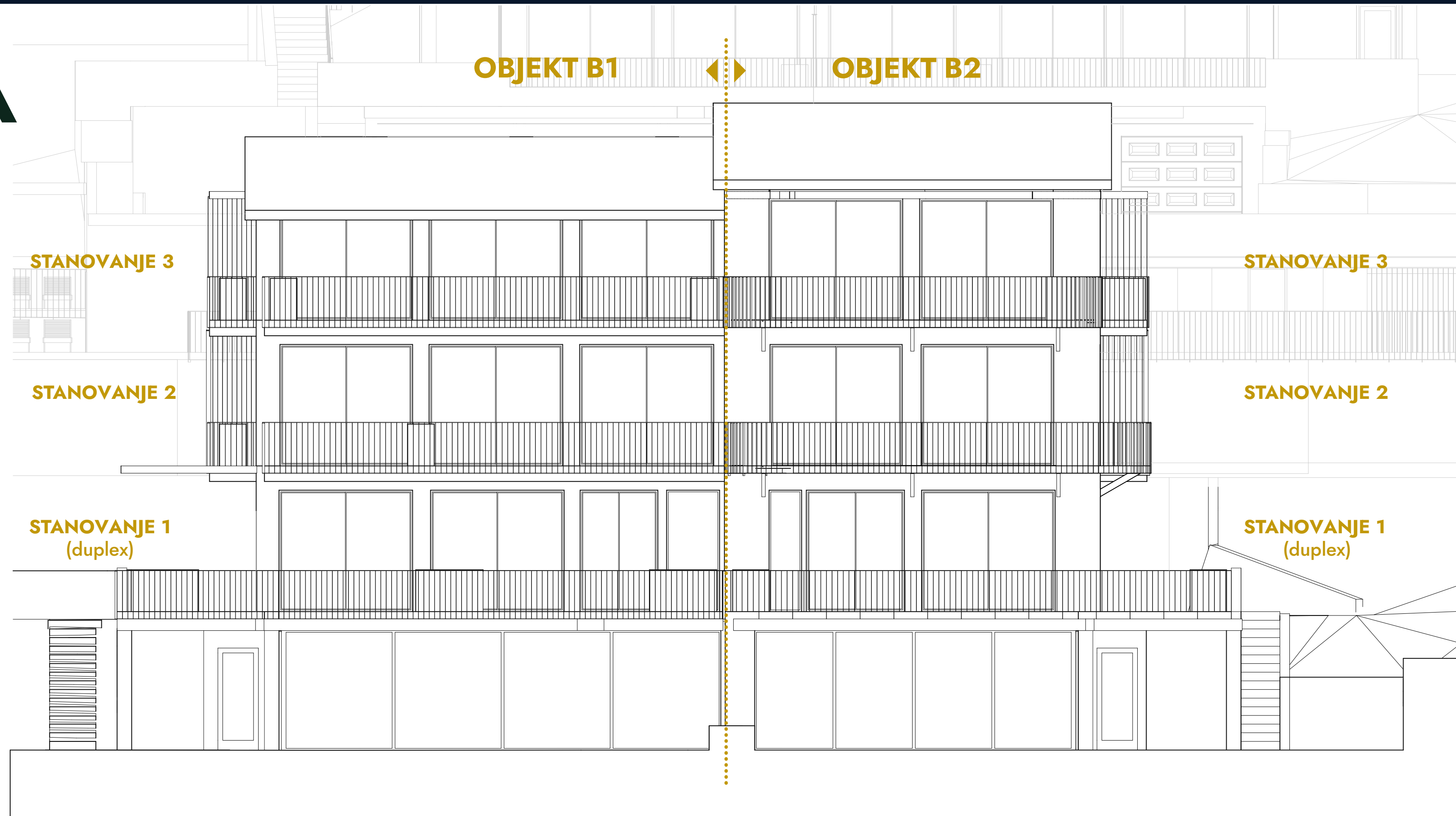
PANORAMIC SEA VIEW  
*Bregi Residence*  
OPATIJA • CROATIA

B



PANORAMIC SEA VIEW  
*Bregi Residence*  
OPATIJA • CROATIA

# FASADA



# OBJEKT B1

## STANOVANJE 1 (DUPLEX)

### NOTRANJI PROSTORI

1. DNEVNI PROSTOR	53,88 m <sup>2</sup>
2. HODNIK	3,12 m <sup>2</sup>
3. WC	1,05 m <sup>2</sup>
4. WELLNESS	7,45 m <sup>2</sup>
5. PREDSOBA	4,78 m <sup>2</sup>
6. HODNIK	7,76 m <sup>2</sup>
7. WC	1,34 m <sup>2</sup>
8. SHRAMBA	2,06 m <sup>2</sup>
9. SOBA	14,25 m <sup>2</sup>
10. KOPALNICA	4,36 m <sup>2</sup>
11. SOBA	12,70 m <sup>2</sup>
12. KOPALNICA	3,34 m <sup>2</sup>
13. SOBA	11,84 m <sup>2</sup>
14. KOPALNICA	3,97 m <sup>2</sup>
KLET	5,90 m <sup>2</sup>
GARAŽA	16,30 m <sup>2</sup>

NOTRANJA POVRŠINA 154,10 m<sup>2</sup>

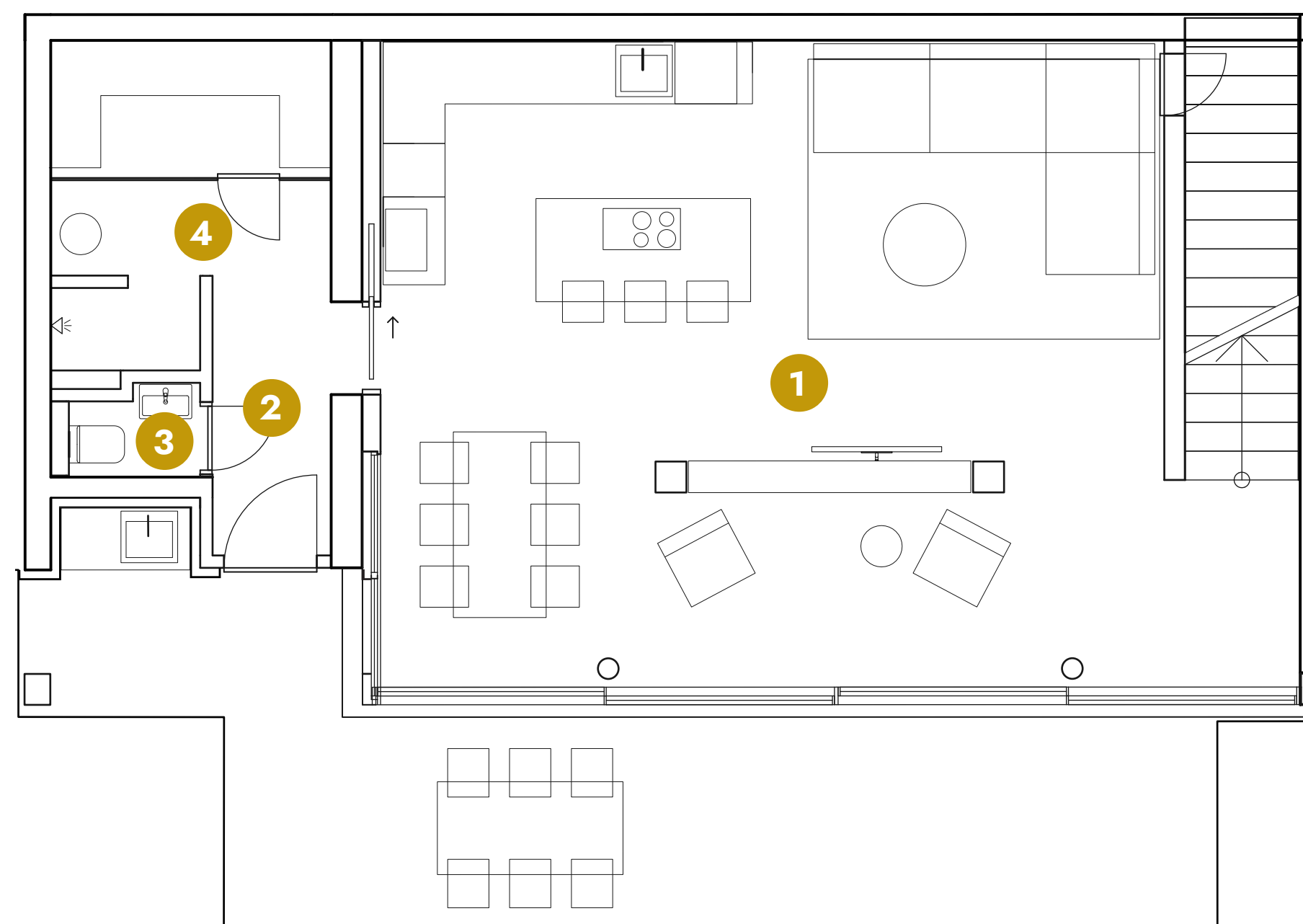
### ZUNANJI PROSTORI

POKRITE TERASE	24,90 m <sup>2</sup>
TERASE	39,60 m <sup>2</sup>
VRT	156,20 m <sup>2</sup>
PARKIRNO MESTO	13,50 m <sup>2</sup>

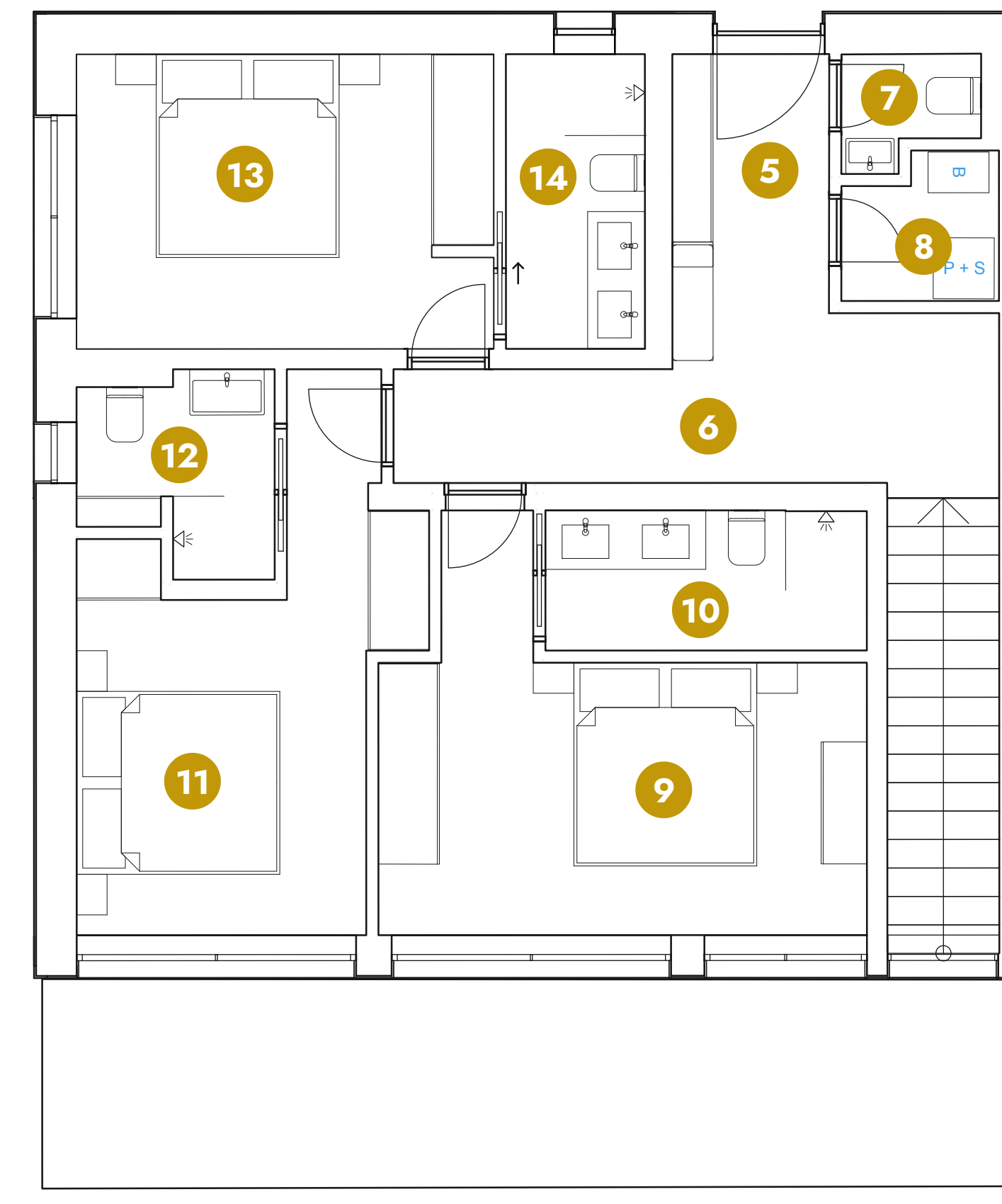
ZUNANJE POVRŠINE 234,10 m<sup>2</sup>

SKUPNA POVRŠINA 388,20 m<sup>2</sup>

### ETAŽA 1



### ETAŽA 2





BREGI RESIDENCE D.O.O.  
TRGOVAČKA ULICA 2A, 52470 UMAG, HRVAŠKA

E-mail: [info@bregi-residence.hr](mailto:info@bregi-residence.hr)